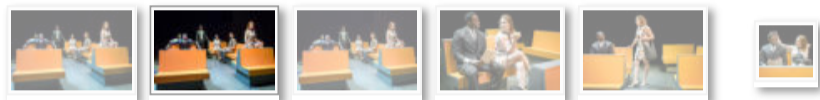




Dutchman

As the 50th Anniversary passes of this seldom-produced play of the Black Arts Movement, KCMeltingPot Theatre brings to the stage Dutchman, by Amiri Baraka.

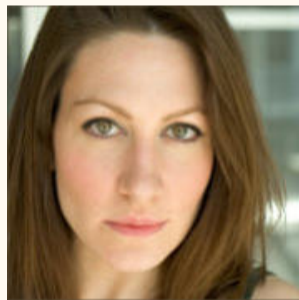
On a subway car in New York city during the late 1960s Clay, a middle-class black man en route to somewhere, is forced to engage the stereotypes of black masculinity in the dominant American imagination head on when he encounters Lula, an eccentric white woman who pokes and prods at his black manhood. Written at the height of the Civil Rights and Black Arts movements in the United States, Amiri Baraka's Obie-Award Winning play Dutchman captures the nation's deepest fears from the past about race and racism in a rich, poetic dialogue, so rich that it flattens time to predict those fears in the present. In his last play as LeRoi Jones, Baraka reflects the zeitgeist of black rage and repression embedded in the fears and stereotypes of whites in the late 20th century. This timeless story boldly foretells the future of racial tensions in America in the 21st century as it turns the notion of post-raciality on its head. KC MeltingPot's production of Dutchman is directed by its Associate Artistic Director, Nicole Hodges Persley and features Laura Jacobs and Frank Oakley as Lula and Clay.



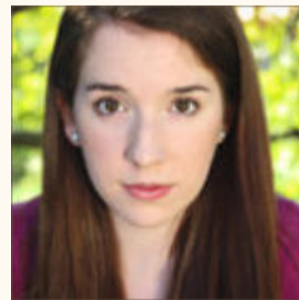
Dutchman Cast/Crew



Frank Oakley III
as Clay



Laura Jacobs
as Lula



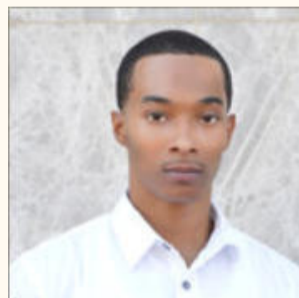
Anna Oakley
as Train Rider



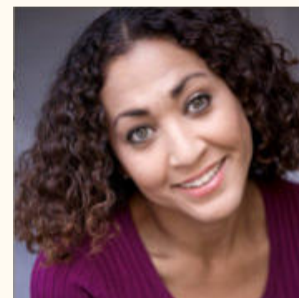
Timothy Burks
as Train Rider



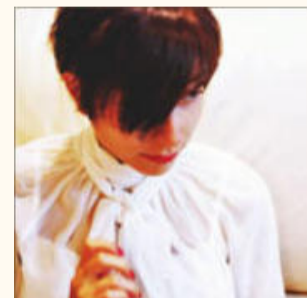
Richard J. Burt
as Train Rider



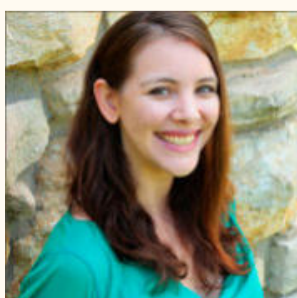
Orlando Newton
as Conductor



Nicole Hodges Persley
Director



Rana Esfandiary
Assistant Director/Set
Designer



Laura Burt
Stage Manager



Troy Cox
Assistant Stage Manager



David Ruis
Dramaturg

<http://www.pitch.com/arts-entertainment/theater/article/20852840/meltingpots-dutchman-revival-summons-old-ills-with-sad-new-relevance>

<https://www.kcapplauds.net/quick-intimate-play-uncovers-racism-of-1960s-era/>

<http://kcstudio.org/kc-meltingpot-tackles-dutchman-angry-sadly-relevant-60s-response-racism/>

<http://kc.perform.ink/2017/02/dutchman-kc-meltingpot-theatre-review/>

<http://kc.perform.ink/2017/02/kc-meltingpot-takes-racially-charged-dutchman/>